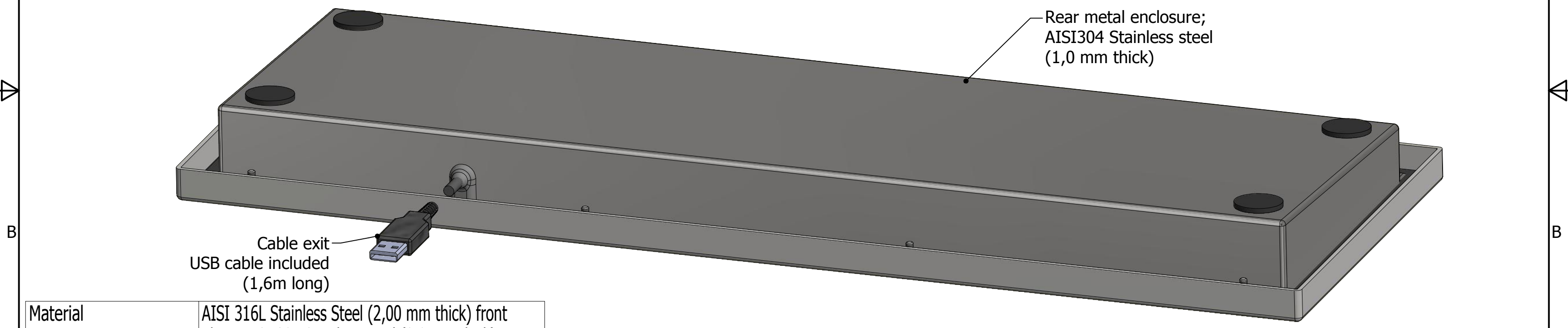
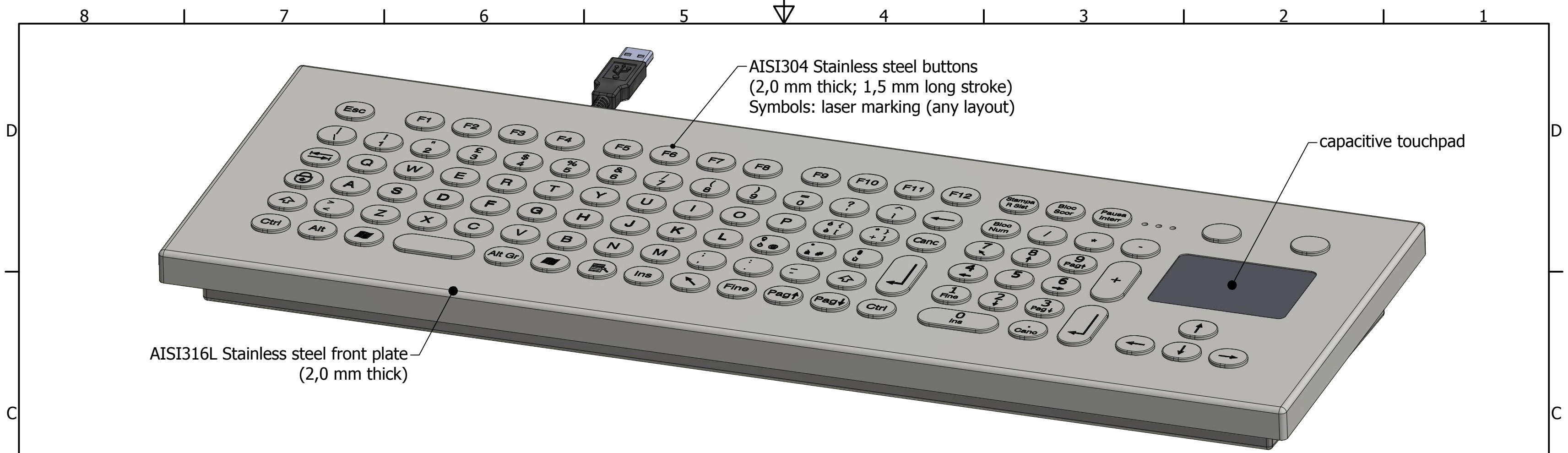


Grafos Steel S.r.l. Via Treves 19/21 41043 Formigine (MO) ITALY Tel. +39.059.57.50.267 www.grafossteel.it		Title: Fit Inox keyboard; 105 buttons (E16 keycap); desktop mount; USB and PS/2 interface; capacitive touchpad P/N: FIT.105E16.T-TP Date: 06/07/2015 Material: -		Rev: FIT.105E16.T-TP (data-sheet).idw Drawn: A.Tosi Approved:																			
Dimensions without indicated tolerances - precision according to: ISO 2768 F		<table border="1"> <tr> <th>Tolerance class</th> <th colspan="3">Length (mm)</th> </tr> <tr> <td>>0 - 6</td> <td>>6-30</td> <td>>30-120</td> <td>>120-400</td> </tr> <tr> <td>C (Coarse)</td> <td>±0.2</td> <td>±0.5</td> <td>±1.2</td> </tr> <tr> <td>M (medium)</td> <td>±0.1</td> <td>±0.2</td> <td>±0.5</td> </tr> <tr> <td>F (Fine)</td> <td>±0.05</td> <td>±0.1</td> <td>±0.2</td> </tr> </table>	Tolerance class	Length (mm)			>0 - 6	>6-30	>30-120	>120-400	C (Coarse)	±0.2	±0.5	±1.2	M (medium)	±0.1	±0.2	±0.5	F (Fine)	±0.05	±0.1	±0.2	Sheet: 1 Of: 2
Tolerance class	Length (mm)																						
>0 - 6	>6-30	>30-120	>120-400																				
C (Coarse)	±0.2	±0.5	±1.2																				
M (medium)	±0.1	±0.2	±0.5																				
F (Fine)	±0.05	±0.1	±0.2																				

UNLESS OTHERWISE SPECIFIED, DIMENSIONS ARE IN MILLIMETERS



Material	AISI 316L Stainless Steel (2,00 mm thick) front plate; AISI 304 Stainless steel (2,0 mm thick) buttons with built-in silicone rubber sealing gasket
Lettering	Laser marking (any layout)
Button stroke	1,5 mm +/- 0,1 mm
Actuation force	1,5 N (typical)
Life expectancy	>2.000.000 cycles
IP Protection rate	IP65
Impact Protection Rate	IK08
Contact technology	Conductive carbon pill on Gold plated PCB
Connection	USB
Operating temperature	0°/+60°C
Storage temperature	-25°/+85°C

Grafos Steel S.r.l. Via Treves 19/21 41043 Formigine (MO) ITALY Tel. +39.059.57.50.267 www.grafossteel.it		Title: Fit Inox keyboard; 105 buttons (E16 keycap); desktop mount; USB and PS/2 interface; capacitive touchpad																	
Date: 06/07/2015		P/N: FIT.105E16.T-TP																	
Material: -		Rev: File: FIT.105E16.T-TP (data-sheet).idw																	
Surface treatment: -		Tolerance class																	
		Dimensions without indicated tolerances - precision according to: ISO 2768 F																	
		Lenght (mm)																	
		<table border="1"> <tr> <td>>0 - 6</td> <td>>6-30</td> <td>>30-120</td> <td>>120-400</td> </tr> <tr> <td>±0.2</td> <td>±0.5</td> <td>±0.8</td> <td>±1.2</td> </tr> <tr> <td>±0.1</td> <td>±0.2</td> <td>±0.3</td> <td>±0.5</td> </tr> <tr> <td>±0.05</td> <td>±0.1</td> <td>±0.15</td> <td>±0.2</td> </tr> </table>		>0 - 6	>6-30	>30-120	>120-400	±0.2	±0.5	±0.8	±1.2	±0.1	±0.2	±0.3	±0.5	±0.05	±0.1	±0.15	±0.2
>0 - 6	>6-30	>30-120	>120-400																
±0.2	±0.5	±0.8	±1.2																
±0.1	±0.2	±0.3	±0.5																
±0.05	±0.1	±0.15	±0.2																
		Drawn: A.Tosi																	
		Approved:																	
		Sheet: 2 Of: 2																	

UNLESS OTHERWISE SPECIFIED, DIMENSIONS ARE IN MILLIMETERS