



Master Touch

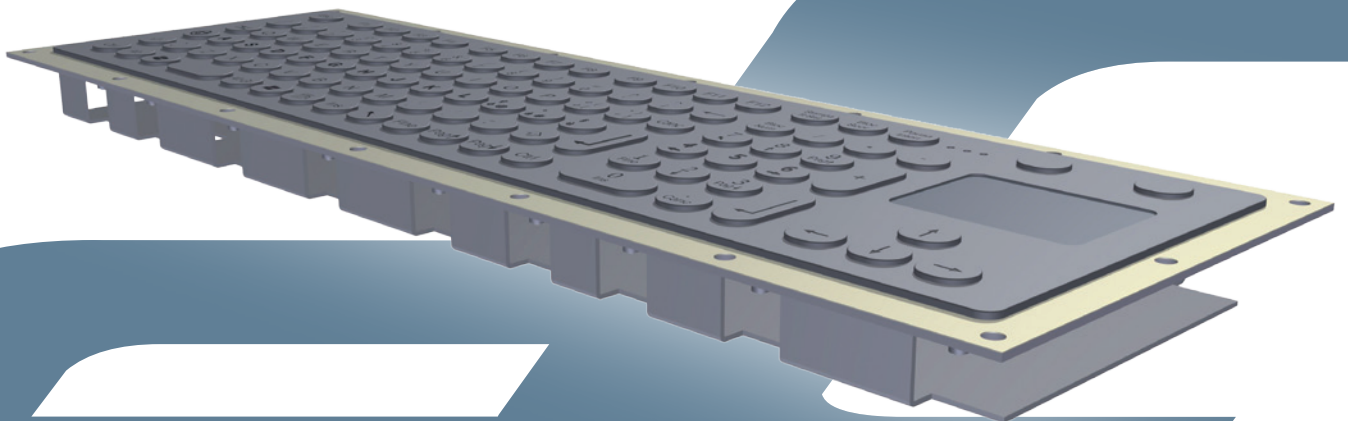
Data Sheet

FIT.105E16.R-TP

Tastiera a 105 tasti corsa lunga montaggio retro con touchpad capacitivo
Rear mounting keyboard 105 long stroke keys with capacitive touchpad

(fit.inOX)  

IP	65 (54 with TI)
IK	08
Cycles	2.000.000
Operating temp.	-10° to +70°C (0° to +50°C with TI)
Storage temp.	-25° to +85°C (-25° to +55°C with TI)

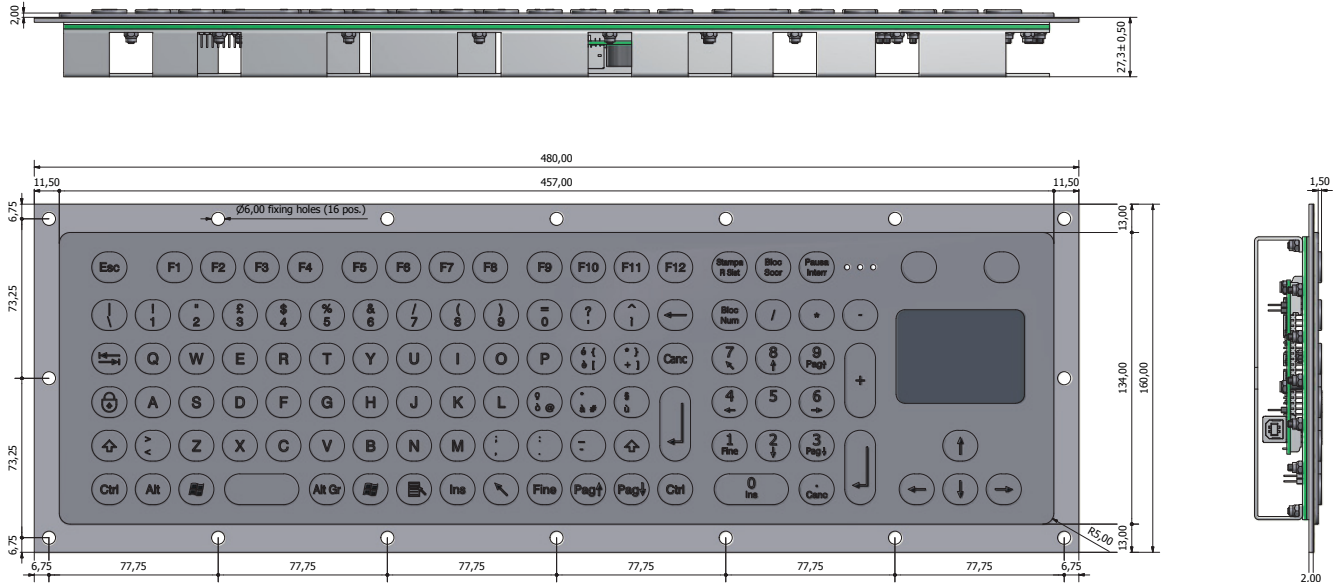


Quick web link

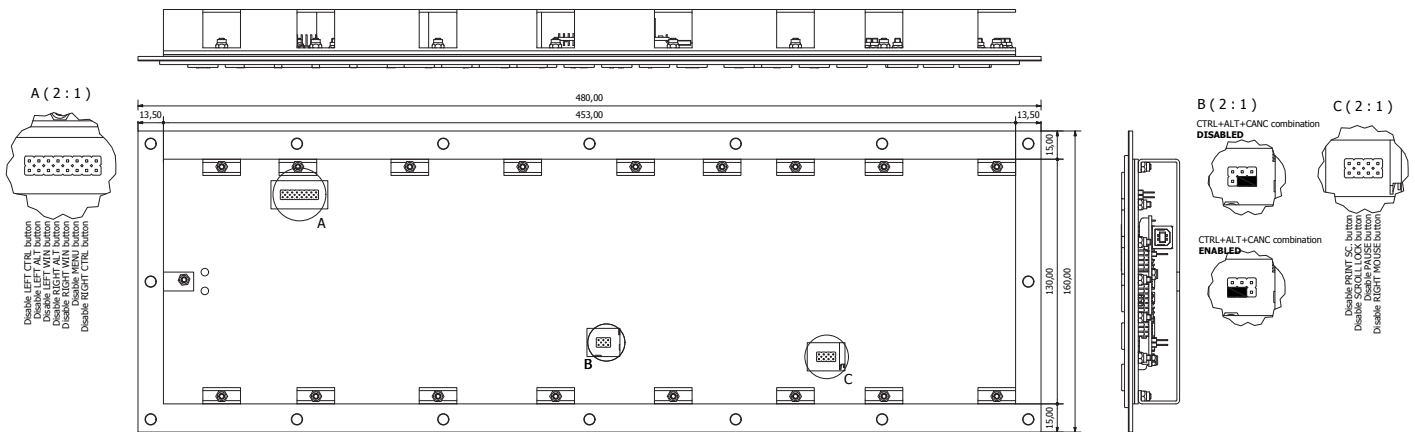


www.grafossteel.it

Disegni Drawings



Fissaggio meccanico e jumper di configurazione
Mechanical fixing and configuration jumpers



Codifica per l'ordine Order Info

FIT.105E16.R-TP-**y**-L-**z**

Es. FIT.105E16.R-TP-M-L-US

Marcatura Simboli / Marking Type
L - Marcatura Laser / Laser marking

y	Connettore Connector	Lingua/layout Language layout	z
	M - MINIDIN PS2	US: QWERTY USA	
	U - USB	IT: QWERTY Italy	
		DE: QWERTY Germany	
		FR: AZERTY France	
		ES: Spain	