



Master Touch

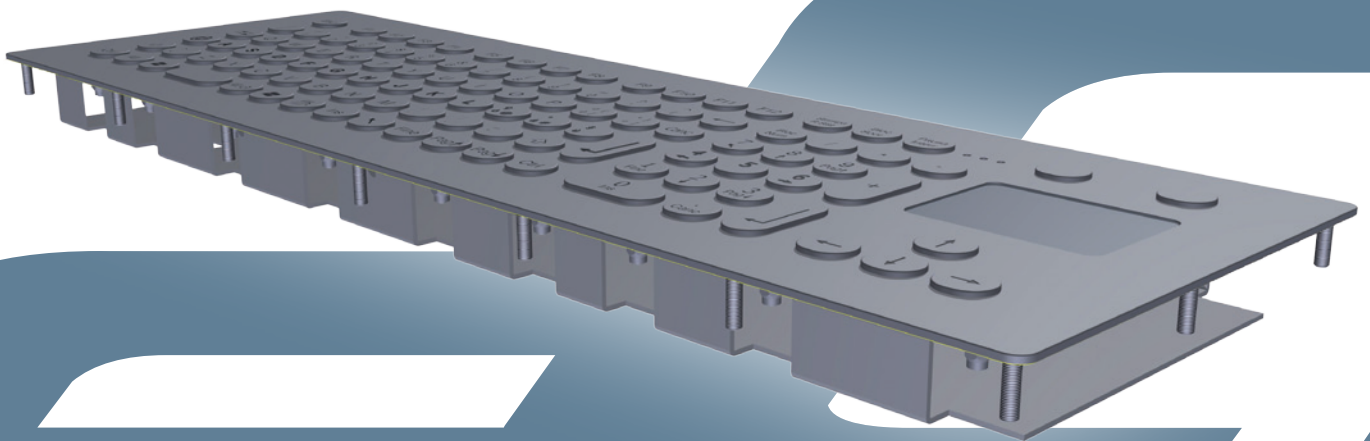
Data Sheet

# FIT.105E16.F-TP

Tastiera a 105 tasti corsa lunga montaggio fronte con touchpad capacitivo  
*Front mounting keyboard 105 long stroke keys with capacitive touchpad*

**(fit.inOX)**  

IP	65 (54 with TI)
IK	08
Cycles	2.000.000
Operating temp.	-10° to +70°C (0° to +50°C with TI)
Storage temp.	-25° to +85°C (-25° to +55°C with TI)

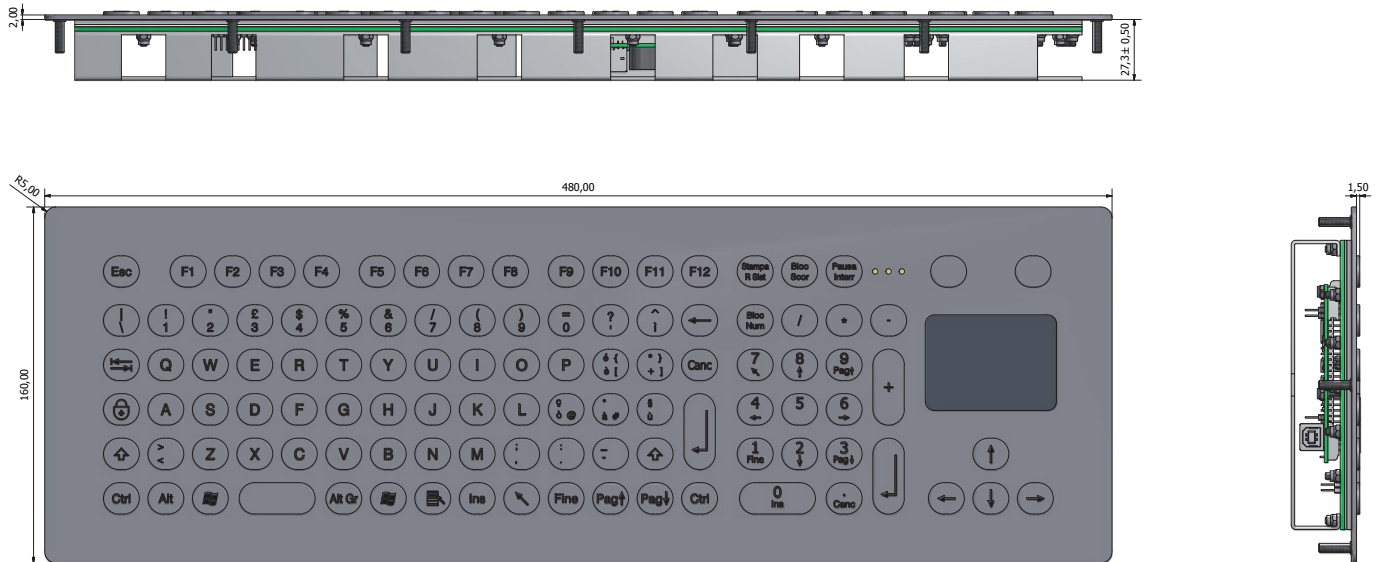


Quick web link

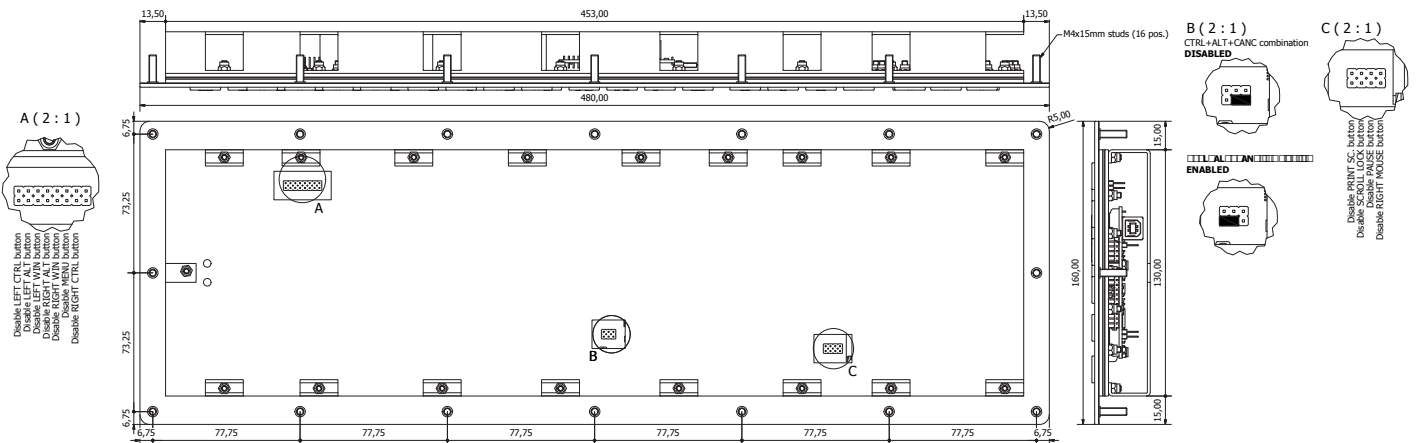


[www.grafossteel.it](http://www.grafossteel.it)

Disegni Drawings



Fissaggio meccanico e jumper di configurazione  
Mechanical fixing and configuration jumpers



Codifica per l'ordine Order Info

FIT.105E16.F-TP- **y** -L- **z**

Es. FIT.105E16.F-TP-M-L-US

Marcatura Simboli / Marking Type  
L - Marcatura Laser / Laser marking

<b>y</b>	Connettore Connector	Lingua/layout Language layout	<b>z</b>
	M - MINIDIN PS2	US: QWERTY USA	
	U - USB	IT: QWERTY Italy	
		DE: QWERTY Germany	
		FR: AZERTY France	
		ES: Spain	